

BOQ

Construction of Toilet block(Ladies + Gents) near nursery

SL. No.	Description of Work	Unit	Quantity	Rate	Amount	Remark
1	Earth Work in excavation by mechanical means (Hydraulic excavator)/ manual means in foundation trenches or drains (not exceeding 1.5 m in width or 10sqm on plan), including dressing of sides and ramming of bottoms, lift upto 1.5 m, including getting out the excavated soil and disposal of surplus excavated soil as directed, within a lead of 50 m. 2.8.1 All Kinds of Soil.	Cum	2.7	260.3	702.81	DSR 2023
2	1:5:10 (1 cement: 5 coarse sand (zone-III) derived from natural sources: 10 graded stone aggregate 40 mm nominal size derived from natural sources). 4.1.10	CUM	1	6518.6	6518.6	
3	Brick work with common burnt clay F.P.S. (non modular) bricks of class designation 7.5 in superstructure above plinth level up to floor V level in all shapes and sizes in: Cement Mortar 1:6 (1 Cement : 6 Coarse Sand) Item No. 6.4.2	CUM	10	9105.95	91,059.50	
4	Brick work with common burnt clay machine moulded perforated bricks of class designation 12. 5 conforming to IS: 2222 in superstructure above plinth level up to floor five level in cement mortar. 1:6 (1 cement: 6 coarse sand): With Modular Bricks 6.13.2	Sqm	12	1123.8	13,,485.6	
5	15 mm cement plaster on rough side of single or half bricks wall of mix: 1:6 (1 Cement : 6 Coarse Sand) item No. 13.5.2	Sqm	80	395.35	31,628	
6	12 mm cement plaster of mix: 1:6 (1 Cement : 6 Coarse Sand) item No. 13.4.2	Sqm	60	343.65	20,619	
7	20 mm cement plaster of mix: 1:4 (1 Cement : 4 Coarse Sand) item No. 13.16.1	Sqm	15	300.45	4,506.75	
8	Applying one coat of water thinnable cement primer of approved brand and manufacture on wall surface. Water thinnable cement primer. Item No. 13.43.1	Sqm	60	64.45	3,867	
9	Distemping with 1st quality acrylic distemper (ready mixed) having VOC content less than 50 gms/litre, of approved manufacturer, of required shade and colour complete, as per manufacturer's specification. Two or more coats on new work Item No. 13.42.1	Sqm	60	92.75	5,565	

Sudheer
09/10/24

10	Finishing wall with water proofing cement paint of required shades: New work (Two or more coats applied @3.84 kg/10 Sqm. Item No. 13.44.1	Sqm	60	185.65	11,139
11	Providing and fixing factory made ISI marked steel glazed doors, windows and ventilators, side/top/centre hung, with beading and all members such as F7D,F4B, K11 B and K12 B etc. complete of standard rolled steel sections, joints mitred and flash butt welded and sash bars tenoned and riveted, including providing and fixing of hinges, pivots, including priming coat of approved steel primer, but excluding the cost of other fittings, complete all as per approved design, (sectional weight of only steel members shall be measured for payment).Fixing with 15 * 3 mm lugs 10 cm long embedded in cement concrete block 15 * 10 * 10 cm of C.C. 1:3:6 (1 Cement: 3 coarse sand: 6 graded stone aggregate 20 mm nominal size) Item No. 10.11.1	Kg	60	131.05	7,863
12	Providing and fixing pre-coated galvanised iron profile sheets (size, shape and pitch of corrugation as approved by Engineer-in-charge) 0.50 mm (+0.05%) total coated thickness with zinc coating 120 grams per sqm as per IS: 277, in 240 mpa steel grade, 5-7 microns epoxy primer on both side of the sheet and polyester top coat 15 18 microns. Sheet should have protective guard film of 25 microns minimum to avoid scratches during transportation and should be supplied in single length upto 12 metre or as desired by Engineer- in-charge. The sheet shall be fixed using self drilling /self tapping screws of size (5.5x 55 mm) with EPDM seal, complete upto any pitch in horizontal/ vertical or curved surfaces, excluding the cost of purlins, rafters and trusses and including cutting to size and shape wherever required. Item No. 12.50	Sqm	12	738.65	8,863.80
13	Providing and fixing pressed steel door frames conforming to IS: 4351, manufactured from commercial mild steel sheet of 1.60 mm thickness, including hinges, jamb, lock jamb, bead and if required angle threshold of mild steel angle of section 50x25 mm, or base ties of 1.60 mm. pressed mild steel welded or rigidly fixed together by mechanical means, including M.S. pressed butt hinges 2.5 mm thick with mortar guards, lock strike-plate and shock absorbers as specified and applying a coat of approved steel primer after pre-treatment of the surface as directed by Engineer-in-charge: Fixing with adjustable lugs with split end tail to each jamb. Item No. 10.14.1.1	metre	12	583.3	6,999.60

DSR 2023

Signature
04/01/24

14	Providing and fixing ISI marked flush door shutters conforming to IS 2202 (Part 1) non-decorative type, core of block board construction with frame of 1st class hard wood and well matched commercial 3 ply veneering with vertical grains or cross bands and face veneers on both faces of shutters: B1930 mm thick including ISI marked Stainless Steel butt hinges with necessary screws Item No. 9.21.2	Sqm	5	2172.1	10,860.50
15	Providing and fixing factory made P.V.C. door frame of size 50 * 47 mm with awall thickness of 5 mm, made out of extruded 5mm rigid PVC foam sheet, mitred at corners and joined with 2 Nos of 150 mm long brackets of 15 * 15 mm M.S. square tube, the vertical door frame profiles to be reinforced with 19 * 19 mm M.S. square tube of 19 gauge, EPDM rubber gasket weather seal to be provided through out the frame. The door frame to be fixed to the wall using M.S. screws of 65/100 mm size, complete as per manufacturer's specification and direction of Engineer- in-Charge. Item No. 9.119	Metre	22	492.7	10,839.40
16	Providing and fixing factory made panel PVC door shutter consisting of frame made out of M.S tubes of 19 gauge thickness and size of 19 mm x 19 mm for styles and 15x15 mm for top & bottom rails. M.S. frame shall have a coat of steel primers of approved make and manufacture. M.S. frame covered with 5 mm thick heat moulded PVC 'C' channel of size 30 mm thickness, 70 mm width out of which 50 mm shall be flat and 20 mm shall be tapered in 45 degree angle on both side forming styles and 5 mm thick, 95 mm wide PVC sheet out of which 75mm shall be flat and 20 mm shall be tapered in 45 degree on the inner side to form top and bottom rail and 115 mm wide PVC sheet out of which 75 mm shall be flat and 20 mm shall be tapered on both sides to form lock rail. Top, bottom and lock rails shall be provided both side of the panel. 10 mm (5 mm x 2) thick, 20 mm wide cross PVC sheet be provided as gap insert for top rail & bottom rail, paneling of 5 mm thick both side PVC sheet to be fitted in the M.S. frame welded/sealed to the styles & rails with 7 mm (5 mm+2 mm) thick x 15 mm wide PVC sheet beading on inner side, and joined together with solvent cement adhesive. An additional 5 mm thick PVC strip of 20 mm width is to be stuck on the interior side of the 'C' Channel using PVC solvent adhesive etc. complete as per direction of Engineer-in-charge, manufacturer's specification & drawing: 30 mm thick plain PVC door shutters Item No. 9.120.1	Sqm	6	3182.95	19,097.70

DSR 2023

Sudhakar
09/10/24

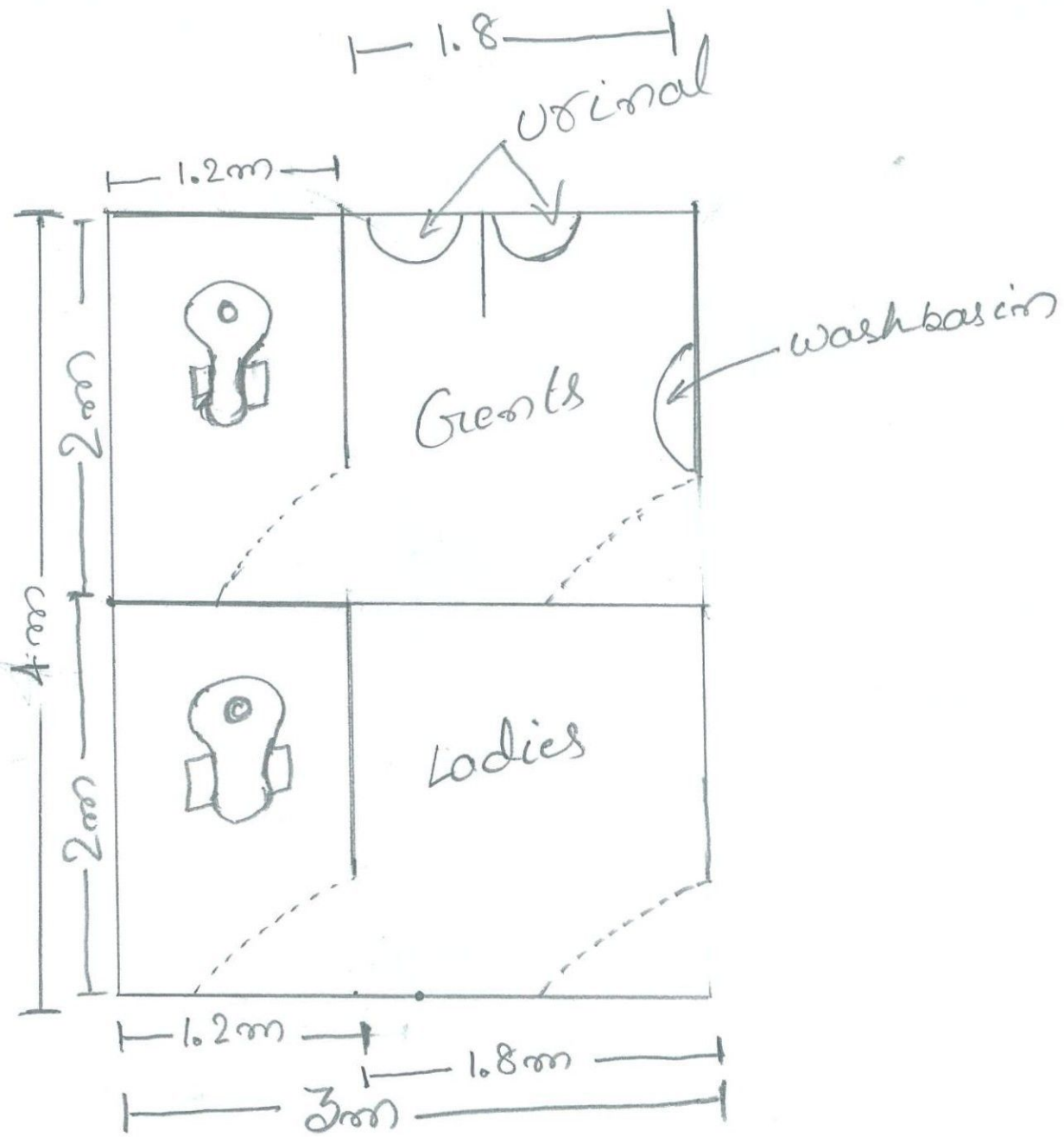
22	Providing and fixing Chlorinated Polyvinyl Chloride (CPVC) pipes, having thermal stability for hot & cold water supply including all CPVC plain & brass threaded fittings This includes jointing of pipes & fittings with one step CPVC solvent cement, trenching, refilling & testing of joints complete as per direction of Engineer in Charge. Internal work - Exposed on wall 15 mm dia nominal bore Internal work - Exposed on wall 15 mm dia nominal bore Item No. 18.10.1	metre	15	366.4	5,496
	Providing and fixing Chlorinated Polyvinyl Chloride (CPVC) pipes, having thermal stability for hot & cold water supply including all CPVC plain & brass threaded fittings This includes jointing of pipes & fittings with one step CPVC solvent cement, trenching, refilling & testing of joints complete as per direction of Engineer in Charge. 25 mm dia nominal bore Item No. 18.10.3	metre	20	551.7	11,034
23	C.P. BRASS FITTINGS Providing and fixing C.P. brass bib cock of approved quality conforming to IS:8931 15 mm nominal bore. Item No. 18.49.1	each	4	506.8	2,027.20
24	Providing and fixing C.P. brass angle valve for basin mixer and geyser points of approved quality conforming to IS:8931 15mm nominal bore Item No. 18.53.1	each	6	574.3	3,445.80
25	Providing and fixing G1. Union in GI pipe including cutting and threading the pipe and making long screws etc complete (New work): 15 mm nominal bore(Item No. 18.46.1) 25mm Nomial board Item no. 10.46.3	each each	4 4	262.3	1049.2
26	Providing and fixing P.V.C. waste pipe for sink or wash basin including PV.C. waste fittings complete. 32 mm dia Item No. 17.28.2.1	each	2	104.35	208.7
27	Providing and fixing trap of self cleansing design with screwed down or hinged grating with or without vent arm complete, including cost of cutting and making good the walls and floors: Sand Cast Iron S&S as per IS 1729 Item No. 17.60.1.2	each	4	1403.45	5,613.80

DSR 2023

S. Shila
09/10/24

28	Providing and fixing 600x450 mm beveled edge mirror of superior glass (of approved quality) complete with 6 mm thick hard board ground fixed to wooden cleats with C.P. brass screws and washers complete. Item No. 17.31	each	2	1411.15	2,822.30	DSR 2023
29	lipped front urinal basin of 430x260x350 mm and 340x410x265 mm sizes respectively with automatic flushing cistern with standard flush pipe and C.P. brass spreaders with brass unions and G.I clamps complete, including painting of fittings and brackets, cutting and making good the walls and floors wherever required: One urinal basin with 5 litre white P.V.C. automatic flushing cistern (17.4.1)	each	2	5268.85	10,537.70	
30	Providing and fixing white vitreous china wash basin including making all connections but excluding the cost of fittings: 17.25.2 Flat back wash basin of size 550 * 400mm	each	2	915.45	1,830.90	
Total:					3,59,688.21	
Market Enhancement 5%					17,984.41	
Total cost Including market enhancement of 5%					3,77,672.62	
Other work required as per the site condition					20,000	
Grand Total					3,97,672.62	
Tentative Amount					3,97,672.62	

S. Oshin
09/10/24



BOQ

Construction of Toilet (1 Ladies + 1 PWD) near library

SL. No.	Description of Work	Unit	Quantity	Rate	Amount	Remark
1	Earth Work in excavation by mechanical means (Hydraulic excavator)/ manual means in foundation trenches or drains (not exceeding 1.5 m in width or 10sqm on plan), including dressing of sides and ramming of bottoms, lift upto 1.5 m, including getting out the excavated soil and disposal of surplus excavated soil as directed, within a lead of 50 m. 2.8.1 All Kinds of Soil.	Cum	1.5	260.3	390.45	DSR 2023
2	Brick work with common burnt clay F.P.S. (non modular) bricks of class designation 7.5 in superstructure above plinth level up to floor V level in all shapes and sizes in: Cement Mortar 1:6 (1 Cement : 6 Coarse Sand) Item No. 6.4.2	Cum	10	9105.95	91059.5	
3	Providing and laying in position specified grade of reinforced cement concrete, excluding the cost of centering, shuttering, finishing and reinforcement-All work up to plinth level: 1:2:4 (1 cement: 2 coarse sand (zone-III): 4 graded stone aggregate 20 mm nominal size (5.1.3)	Cum	2	8583.4	17166.8	
4	Reinforced cement concrete work in beams, suspended floors, roofs having slope up to 15° landings, balconies, shelves, chajjas, lintels, bands, plain window sills, staircases and spiral stair cases above plinth level up to floor five level, excluding the cost of centering, shuttering, finishing and reinforcement with 1:1.5:3 (1 cement: 1.5 coarse sand(zone-III) derived from natural sources: 3 graded stone aggregate 20 mm nominal size derived from natural sources (5.3.1)	Cum	0.5	11505.5	5752.75	
5	Centering and shuttering including strutting, propping etc. and removal of form for: (5.9.3): Suspended floors, roofs, landings, balconies and access platform (5.9.6): Columns,Pillars,piers,Abutments,Posts and Struts	Sqm	150	927.25	139087.5	
		Sqm	20	961.30	19226	
6	15 mm cement plaster on rough side of single or half bricks wall of mix: 1:6 (1 Cement : 6 Coarse Sand) item No. 13.5.2	Sqm	90	395.35	35581.5	

S. Oshra
04/10/24

7	12 mm cement plaster of mix: 1:6 (1 Cement : 6 Coarse Sand) item No. 13.4.2	Sqm	80	343.65	27492	DSR 2023
8	Applying one coat of water thinnable cement primer of approved brand and manufacture on wall surface. Water thinnable cement primer. Item No. 13.43.1	Sqm	140	64.45	9023	
9	Finishing wall with water proofing cement paint of required shades: New work (Two or more coats applied @3.84 kg/10 Sqm. Item No. 13.44.1	Sqm	140	116.9	16366	
10	Providing and fixing factory made ISI marked steel glazed doors, windows and ventilators, side/top/centre hung, with beading and all members such as F7D, F4B, K11 B and K12 B etc. complete of standard rolled steel sections, joints mitred and flash butt welded and sash bars tenoned and riveted, including providing and fixing of hinges, pivots, including priming coat of approved steel primer, but excluding the cost of other fittings, complete all as per approved design, (sectional weight of only steel members shall be measured for payment). Fixing with 15 * 3 mm lugs 10 cm long embedded in cement concrete block 15 * 10 * 10 cm of C.C. 1:3:6 (1 Cement: 3 coarse sand: 6 graded stone aggregate 20 mm nominal size) Item No. 10.11.1	Kg	50	131.05	6552.5	
11	Providing and fixing factory made P.V.C. door frame of size 50 * 47 mm with a wall thickness of 5 mm, made out of extruded 5mm rigid PVC foam sheet, mitred at corners and joined with 2 Nos of 150 mm long brackets of 15 * 15 mm M.S. square tube, the vertical door frame profiles to be reinforced with 19 * 19 mm M.S. square tube of 19 gauge, EPDM rubber gasket weather seal to be provided through out the frame. The door frame to be fixed to the wall using M.S. screws of 65/100 mm size, complete as per manufacturer's specification and direction of Engineer- in-Charge. Item No. 9.119	Metre	10	492.7	4927	

S. S. S. S.
04/10/24

12	<p>Providing and fixing factory made panel PVC door shutter consisting of frame made out of M.S tubes of 19 gauge thickness and size of 19 mm x 19 mm for styles and 15x15 mm for top & bottom rails. M.S. frame shall have a coat of steel primers of approved make and manufacture. M.S. frame covered with 5 mm thick heat moulded PVC 'C' channel of size 30 mm thickness, 70 mm width out of which 50 mm shall be flat and 20 mm shall be tapered in 45 degree angle on both side forming styles and 5 mm thick, 95 mm wide PVC sheet out of which 75mm shall be flat and 20 mm shall be tapered in 45 degree on the inner side to form top and bottom rail and 115 mm wide PVC sheet out of which 75 mm shall be flat and 20 mm shall be tapered on both sides to form lock rail. Top, bottom and lock rails shall be provided both side of the panel. 10 mm (5 mm x 2) thick, 20 mm wide cross PVC sheet be provided as gap insert for top rail & bottom rail, paneling of 5 mm thick both side PVC sheet to be fitted in the M.S. frame welded/sealed to the styles & rails with 7 mm (5 mm+2 mm) thick x 15 mm wide PVC sheet beading on inner side, and joined together with solvent cement adhesive. An additional 5 mm thick PVC strip of 20 mm width is to be stuck on the interior side of the 'C' Channel using PVC solvent adhesive etc. complete as per direction of Engineer-in-charge, manufacturer's specification & drawing: 30 mm thick plain PVC door shutters Item No. 9.120.1</p>	Sqm	6	3182.95	19097.7	DSR 2023
13	<p>Providing and fixing 1st quality ceramic glazed wall tiles conforming to IS: 15622 (thickness to be specified by the manufacturer), of approved make, in all colours, shades except burgundy, bottle green, black of any size as approved by Engineer-in-Charge, in skirting, risers of steps and dados, over 12 mm thick bed of cement mortar 1:3 (1 cement: 3 coarse sand) and jointing with grey cement slurry @ 3.3kg per sqm, including pointing in white cement mixed with pigment of matching shade complete Item No. 8.31</p>	Sqm	35	1267.95	44378.25	

S. O. K. K.
04/10/24

14	Providing and laying Ceramic glazed floor tiles of size 300x300 mm (thickness to be specified by the manufacturer) of 1st quality conforming to IS. 15622 of approved make in colours such as White, Ivory, Grey, Fume Red Brown, laid on 20 mm thick cement mortar 1.4 (1 Cement 4 Coarse sand), Jointing with grey cement slurry @ 3.3 kg/sqm including pointing the joints with white cement and matching pigment etc.. complete. Item No. 11.37	Sqm	12	1096.55	13158.6	DSR 2023
15	Providing and fixing wash basin with C.I. brackets, 15 mm C.P. brass pillar taps, 32 mm C.P. brass waste of standard pattern, including painting of fittings and brackets, cutting and making good the walls wherever require: white Vitreous China Flat back wash basin size 550x 400 mm with single 15 mm C.P. brass pillar tap Item No. 17.7.4	Each	2	1879.2	3758.4	
16	Providing and fixing Chlorinated Polyvinyl Chloride (CPVC) pipes, having thermal stability for hot & cold water supply including all CPVC plain & brass threaded fittings This includes jointing of pipes & fittings with one step CPVC solvent cement, trenching, refilling & testing of joints complete as per direction of Engineer in Charge. Internal work - Exposed on wall 15 mm dia nominal bore Internal work - Exposed on wall 15 mm dia nominal bore (Item No. 18.10.1) 25 mm dia nominal bore (Item No. 18.10.3)	Metre Metre	15 20	366.4 551.70	5496 11034	
17	C.P. BRASS FITTINGS Providing and fixing C.P. brass bib cock of approved quality conforming to IS:8931 15 mm nominal bore. Item No. 18.49.1	Each	4	506.8	2027.2	

S. O. B. K.
04/10/24

18	Providing and fixing C.P. brass angle valve for basin mixer and geyser points of approved quality conforming to IS:8931 15mm nominal bore Item No. 18.53.1	Each	6	574.3	3445.8	DSR 2023
19	Providing and fixing G1. Union in GI pipe including cutting and threading the pipe and making long screws etc complete (New work): 15 mm nominal bore(Item No. 18.46.1) 25mm Nomial board (Item no. 10.46.3)	Each Each	6 1.2	318.35 439.25	1910.1 527.1	
20	Providing and fixing P.V.C. waste pipe for sink or wash basin including PV.C. waste fittings complete. 32 mm dia (Item No. 17.28.2.1)	Each	2	119.55	239.1	
21	Providing and fixing trap of self cleansing design with screwed down or hinged grating with or without vent arm complete, including cost of cutting and making good the walls and floors: Sand Cast Iron S&S as per IS 1729 Item No. 17.60.1.2	Each	4	1683.55	6734.2	
22	Providing and fixing 600x450 mm beveled edge mirror of superior glass (of approved quality) complete with 6 mm thick hard board ground fixed to wooden cleats with C.P. brass screws and washers complete. Item No. 17.31	Each	2	1607.95	3215.9	
23	Providing and fixing white vitreous china wash basin including making all connections but excluding the cost of fittings: 17.25.2 Flat back wash basin of size 550 * 400mm	Each	2	915.45	1830.9	
Total:					3,42,985	
	Market Inhancement 5%				17,149.25	
	Total cost Including market inhancement of 5%				3,60,134.15	
	Other work required as per the site condition				20,000	
	Grand Total				3,80,134.15	
	Tentative Amount				3,80,134.15	

S. D. Kulkarni
04/01/24